

Firmware Update GEWA Digitalpiano

DP300G/DP340G

This manual has the purpose of helping you update your DP2xxG series piano. Please carefully read the instructions before starting the update so you can avoid possible damage to your piano.

➤ You will need the following:

To complete this Firmware update you need a windows operated PC and a USB cable (type A/B).

OS: Windows 10

➤ 3 Steps for a successful update

Download ZIP File	Starting the GEWA DP-Updater	Finish the update
<ul style="list-style-type: none">• Extract ZIP file.• Please make sure that you have downloaded the correct ZIP file for your Piano.	<ul style="list-style-type: none">• Connect the piano to computer via USB cable.• Set piano to update mode.• Start update and select DFU-file.• Start update.	<ul style="list-style-type: none">• Turn off your piano.• Finish the GEWA DP updater.• Disconnect the connection between your PC and your piano.• Reboot your piano to finish all updates.

Firmware Update GEWA Digitalpiano

DP300G/DP340G

1. Application and DFU-File

Unzip the downloaded file from our homepage to a preferred location on your computer.

2. Connecting the piano to your computer

Connect your computer and piano using a USB cable, type A/B (printer cable).

Please connect the cable to the USB-A port on your computer and connect the other cable end to your piano. You will find the connection USB-B located at the back of your piano. (See operating instructions)

3. Starting the Update

Start the program **GEWA DP-Updater.exe** and follow instructions.

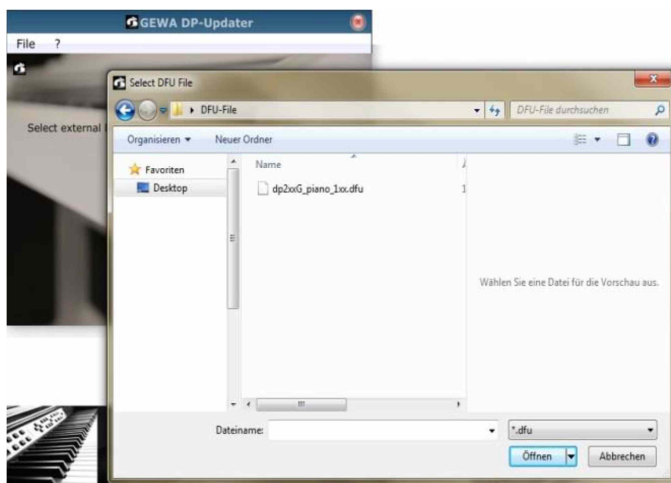


Firmware Update GEWA Digitalpiano

DP300G/DP340G

4. Select the DFU-File.

To continue with the DP update, opening the required DPU-file is essential.
Please open it from the previously saved location in your computer.



5. Turn on your piano in update mode.

Hold the two keys as shown in the picture below, as well as turning the piano on.
This will allow you to start the piano in update mode.
The LED light located at the front of your piano will turn on.
If this is not the case then please preform this step again.



Firmware Update GEWA Digitalpiano

DP300G/DP340G

6. Load New Firmware

Now you can start the update by selecting UPDATE DEVICE.
This process should only take a few seconds.

7. Finish the update and restart the piano.

Once your update is complete, select DEVICE UNPLUGGED. This will disconnect the computer from your piano.

Press and hold the on/off switch till the LED turns off.

Once this is complete you may disconnect the cable and close the program.

All changes will take effect as soon as the piano is next turned on.

8. Update Problems

Please contact customer service if you experience any update problems

Customer Service Contact:

piano-support@gewamusic.com